



# Smart Water Networks

Aqua City

Lille, 15 June 2016

Catalina Pedraza

# The Thames Water region



## Did you know...?

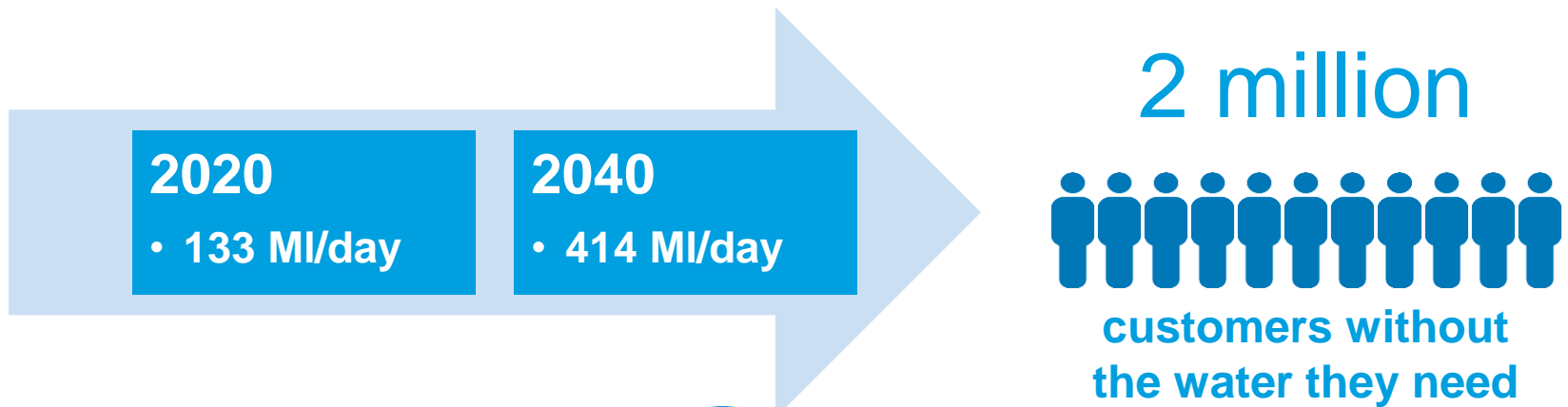
- ✓ We serve 15 million customers – that's 24% of the UK population
- ✓ We maintain 85,000 miles of water mains and sewers – enough to wrap around the world 3.5 times!
- ✓ We supply enough tap water every day to fill more than 1,000 Olympic swimming pools – that's 2.6 billion litres
- ✓ We treat nearly twice as much sewage daily – that's 4.2 billion litres



# Our challenges



This is manifesting as a deficit in supply versus demand

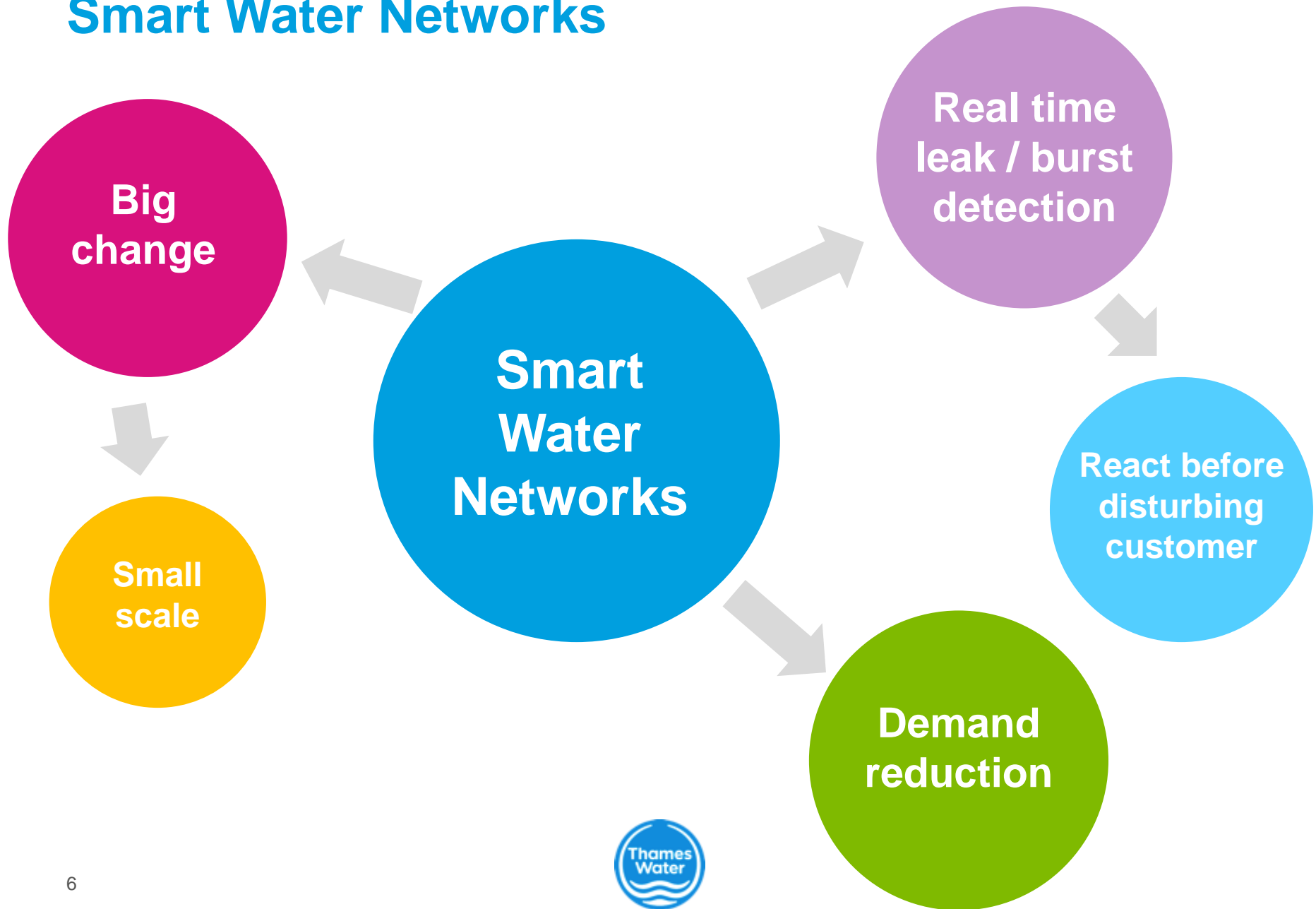


# What can we do?

- Bulk water supply
- Reservoir storage
- Indirect Potable Water Reuse

- Metering
- Leakage reduction
- Water efficiency
- Non-Potable Water Reuse

# Smart Water Networks



# Smart Water Networks

Small  
scale

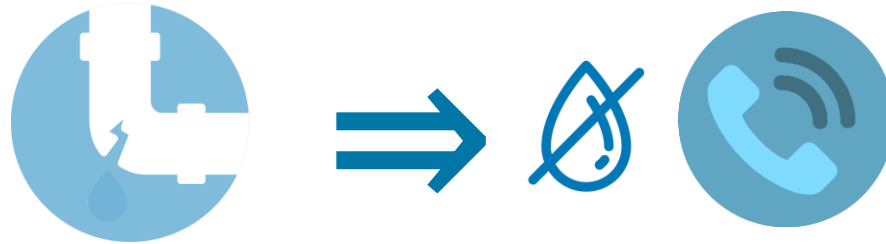
SW4EU



- Metering
- Leakage reduction
- Water efficiency
- Non-Potable Water Reuse



# Leakage management



- ✓ **Smart meters**
- ✓ **Trunkminders**
- ✓ **Burstminders**
- ✓ **Incertameters**
- ✓ **Algorithms**





# Data challenges





LET'S SOLVE THIS PROBLEM BY  
USING THE BIG DATA NONE  
OF US HAVE THE SLIGHTEST  
IDEA WHAT TO DO WITH



TOM  
FISH  
BURNE

© marketoonist.com



# Concluding remarks

Smart  
Water  
Networks



Small  
scale



# Questions?

[Catalina.Pedraza@thameswater.co.uk](mailto:Catalina.Pedraza@thameswater.co.uk)

